

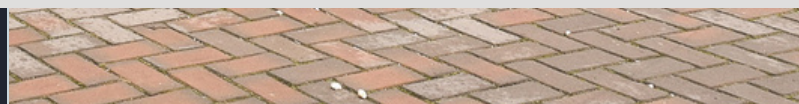


Brochure

John Miltonlaan 32
2135 WE Hoofddorp



Asking price € 1,175,000 K.K.



Features & Specifications

HANDOVER

- Asking price: € 1,175,000 k.k.
- Acceptance: Flexible / In consultation

SURFACES AND CONTENTS

- Living area: 235 m²
- Indoor space: 7 m²
- Gross Volume: 748 m³
- The measurement report has been drawn up in accordance with the NEN 2580 guidelines

LOCATION

- Central location, close to the center, highway, shops, several bus stops.

BUILD

- Type of object: Semi-detached house
- Construction period: 2022
- Roof tiles
- Types of insulation: Fully insulated
- Underfloor heating
- Heat pump
- heat recovery system

ENERGY LABEL

- A



Particularities

- PARTICULARITIES
- 20 Solar panels
- Underfloor heating
- Heat pump/heat recovery system
- Water softener/water filter (Brand: Boshuis)
- Bora X pure
- Very exclusive sun blinds and mosquito screens throughout the house.
- The striking details, such as the Hue lighting plan throughout the home, provide an extra experience.
- Indoor fireplace (Planika Fire Line Automatic 3, bio-ethanol fireplace)
- Charging point (22kw)



Layout

UNIQUE HOME – UNIQUE LOCATION – UNIQUE OPPORTUNITY

This characteristic and spacious home is located in the sustainable neighborhood in Toolenburg-Zuid in Hoofddorp, where the architecture is in harmony with the environment.

The coherence of high-end, natural materials and luxurious details come together throughout the entire house and beautifully landscaped garden.

LAYOUT

The spacious driveway, equipped with a charging point, offers space for several cars. From the entrance hall, the hall offers enough space for storage options, a separate toilet, the stairs to the first floor and provides light in the stairwell, which provides a pleasant setting and access to the kitchen-diner, which is experienced as the heart of the house.

Thanks to the sliding doors that can be opened completely, the low-maintenance garden fits seamlessly with the indoor atmosphere. The impressive canopy has lighting, a fireplace and a place where you can enjoy yourself until late in the evening. The view of this family home is the most beautiful from here.

By using natural tones, a beautiful floor with underfloor heating, plastered walls and ceilings, which serve as a basis for the entire home, the materials, the high-end kitchen, equipped with IQ 700 Siemens built-in appliances and furniture, come into their own. so that you can optimally enjoy the homely atmosphere.

1-2 floor

FIRST FLOOR The first spacious bedroom is located at the front. The second spacious bedroom is located at the rear of the house with access to a custom-made luxurious walk-in closet. Both bedrooms have acoustic ceilings for ultimate serenity. The luxurious bathroom has a chic dark tile, toilet, washbasin and shower.

SECOND FLOOR The second bathroom is located in the middle of this floor, which uses the same tile as the other bathroom and also provides unity and tranquility. The third and fourth bedrooms easily serve as a full-fledged home office, guest room or gym. Setup for heat recovery system, washing machine and dryer.



Area

AREA

The John Miltonlaan is located in the Tudor Park and has developed into a charming and lively neighborhood. In the area you will find countless culinary restaurants, exclusive boutiques and cocktails-wines-bites bars for a perfect evening out with friends or colleagues.

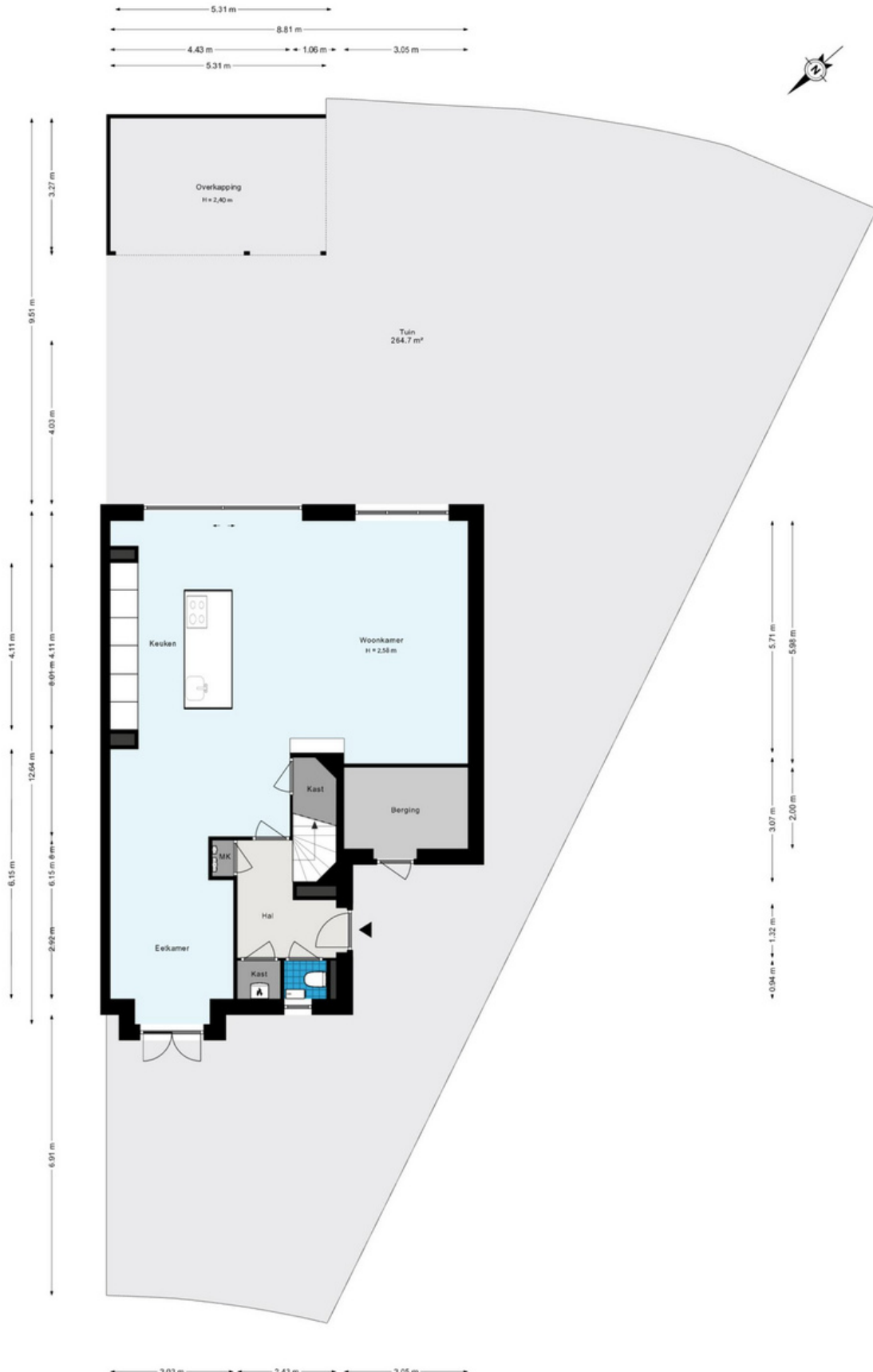
ACCESSIBILITY

The John Miltonlaan is centrally located and you can easily reach other locations in the city by bicycle. For destinations further afield in the city, public transport is a few minutes' walk away.

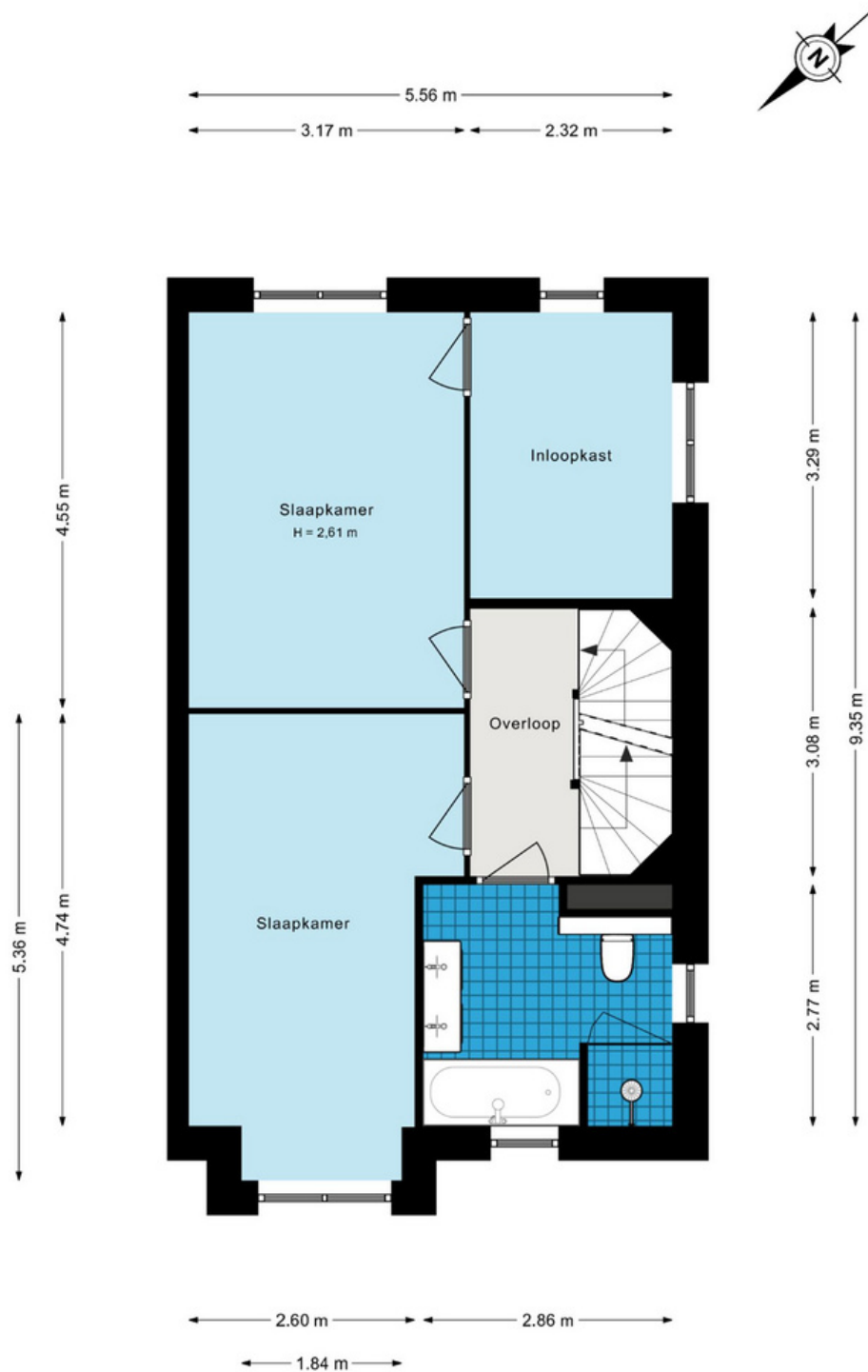
Due to its central location, John Miltonlaan is an ideal place to live for people who work in (near) Hoofddorp, Schiphol and Amsterdam and for those who work outside the city, John Miltonlaan is also easily accessible by private transport with a good connection to the A4, A5, A9 highways.



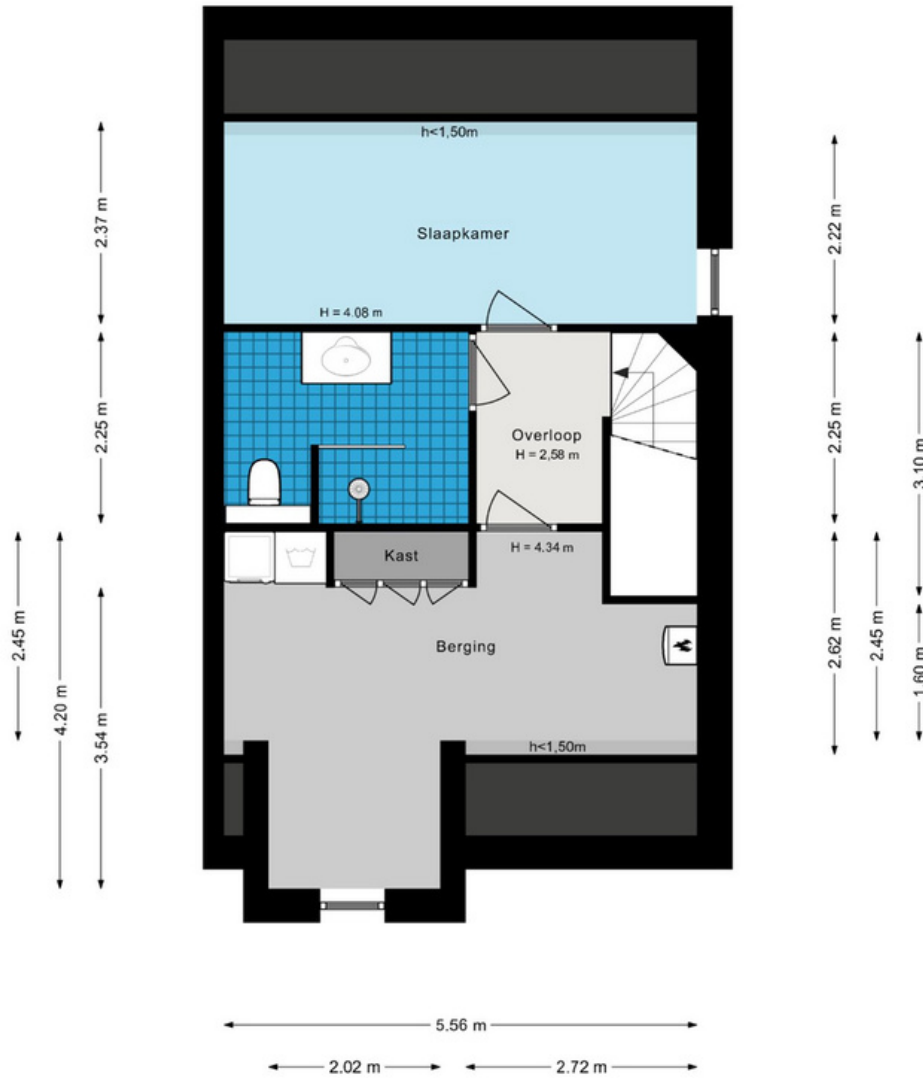
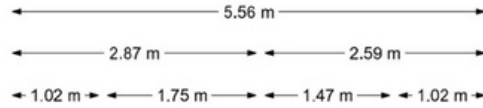
Map



Map



Map

































































020-2101004 / 085-0602145



info@nmpmakelaars.nl



www.nmpmakelaars.nl



Olympic Stadium 24-28
1076 DE Amsterdam



Gageldijk 2B 3602 AL Maarsse



nmpmakelaars.amsterdam



NMP brokers etc. E.G